



Commonwealth of Kentucky DEPARTMENT OF HIGHWAYS

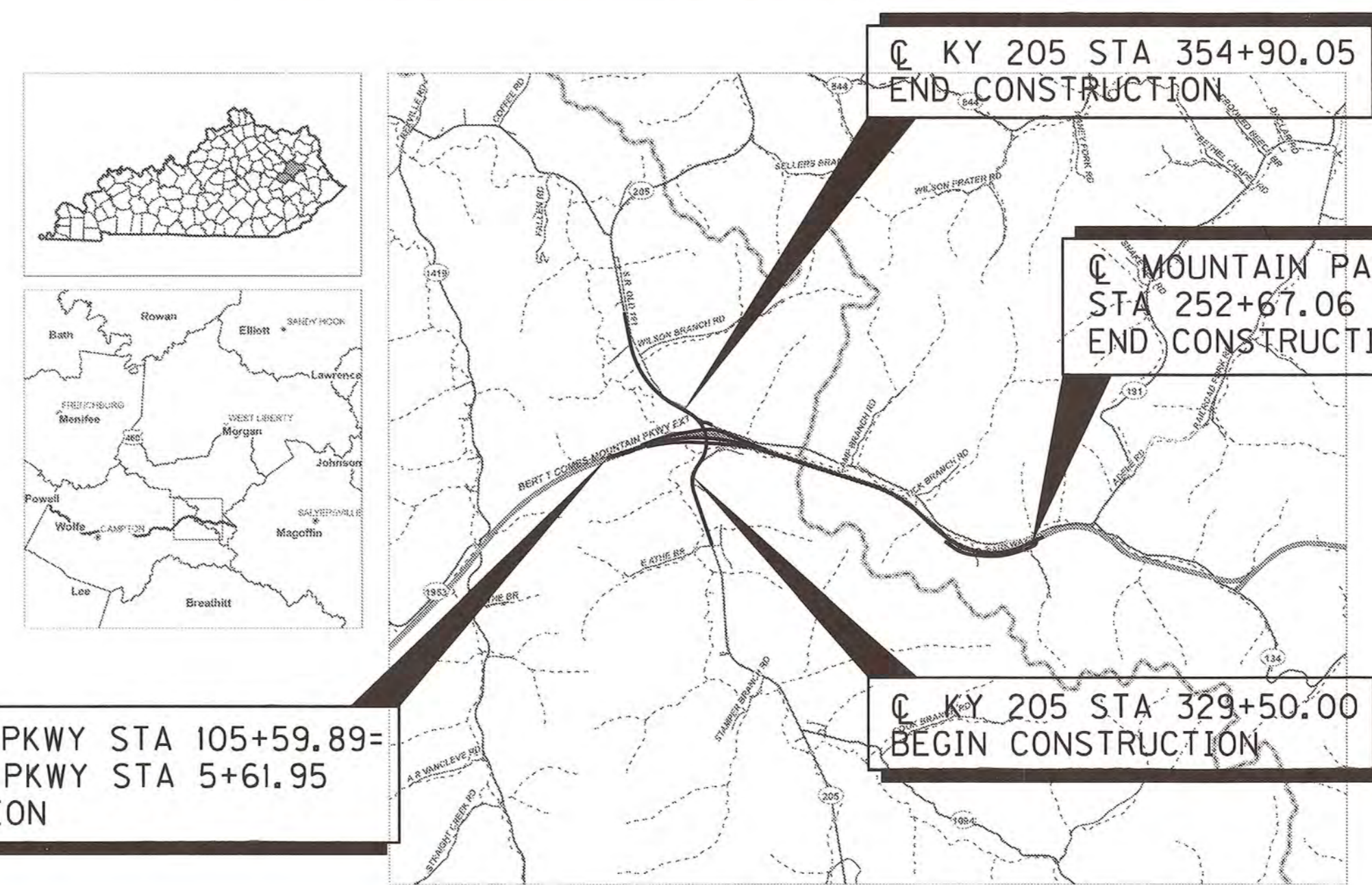
PLANS OF PROPOSED PROJECT

MOUNTAIN PARKWAY (KY 9009) IMPROVEMENT FROM KY 205 INTERCHANGE TO MILE POINT 59.2

INDEX OF SHEETS	
SHEET NO.	DESCRIPTION
R1	LAYOUT SHEET
R2	TYPICAL SECTIONS
R3	SHEET LAYOUT
R4-R49	PLAN AND PROFILE SHEETS
R50	RIGHT OF WAY SUMMARY SHEETS
R51-R53	RIGHT OF WAY STRIP MAP SHEETS
R54-R55	DETAIL SHEETS
R56-R64	COORDINATE CONTROL SHEETS

SHEETS NOT INCLUDED IN TOTAL SHEETS
R2A, R2B, R2C, R2D

STANDARD DRAWINGS	
NUMBER	



LICKING VALLEY RURAL ELECTRIC

LEGEND

INSTALL POLE	
REMOVE POLE	
INSTALL CONDUCTOR	
REMOVE CONDUCTOR	
INSTALL UNITS	N:
REMOVE UNITS	RM:
POLE PRIVATE	<u>23</u>
POLE PUBLIC	—
POLE REMOVE	<u>23</u>
POLE INSTALL	<u>24</u>

THIS PROJECT IS A FULLY CONTROLLED ACCESS HIGHWAY

FILE NAME: I:\LEX\PRJ\00008298\DESIGN\PLAN SET\ROO\DOOLS.DGN
 USER: bcoombs DATE PLOTTED: October 1, 2014
 E-SHEET NAME: MicroStation v8.11.9.357

DESIGN CRITERIA	
CLASS OF HIGHWAY	_____
TYPE OF TERRAIN	_____
DESIGN SPEED	_____
REQUIRED NPSD	_____
REQUIRED PSD	_____
LEVEL OF SERVICE	_____
ADT PRESENT ()	_____
ADT FUTURE ()	_____
DHVV	_____
D %	_____
T %	_____

GEOGRAPHIC COORDINATES	
LATITUDE	<u>37</u> DEGREES <u>45</u> MINUTES <u>42</u> SECONDS NORTH
LONGITUDE	<u>083</u> DEGREES <u>19</u> MINUTES <u>33</u> SECONDS WEST

DESIGNED	
% RESTRICTED SD	_____
LEVEL OF SERVICE	_____
MAX. DISTANCE W/O PASSING	_____

EASTBOUND MOUNTAIN PARKWAY		WESTBOUND MOUNTAIN PARKWAY	
LENGTH <u>842.24</u> LIN. FT. <u>0.160</u> MILES	LENGTH <u>840.18</u> LIN. FT. <u>0.159</u> MILES	LENGTH <u>842.24</u> LIN. FT. <u>0.160</u> MILES	LENGTH <u>840.18</u> LIN. FT. <u>0.159</u> MILES
ADDED [] FOR EQUALITIES _____ LIN. FT.	ADDED [] FOR EQUALITIES _____ LIN. FT.	ADDED [] FOR EQUALITIES _____ LIN. FT.	ADDED [] FOR EQUALITIES _____ LIN. FT.
DEDUCTED [] NOT INCLUDED _____ LIN. FT.	DEDUCTED [] NOT INCLUDED _____ LIN. FT.	DEDUCTED [] NOT INCLUDED _____ LIN. FT.	DEDUCTED [] NOT INCLUDED _____ LIN. FT.
RAILROAD CROSSINGS NO. _____ LIN. FT.	RAILROAD CROSSINGS NO. _____ LIN. FT.	RAILROAD CROSSINGS NO. _____ LIN. FT.	RAILROAD CROSSINGS NO. _____ LIN. FT.
BRIDGES _____ LIN. FT.	BRIDGES _____ LIN. FT.	BRIDGES _____ LIN. FT.	BRIDGES _____ LIN. FT.

MOUNTAIN PARKWAY		KY 205	
LENGTH <u>13313.91</u> LIN. FT. <u>2.522</u> MILES	LENGTH <u>2540.05</u> LIN. FT. <u>0.481</u> MILES	LENGTH <u>13313.91</u> LIN. FT. <u>2.522</u> MILES	LENGTH <u>2540.05</u> LIN. FT. <u>0.481</u> MILES
ADDED [] FOR EQUALITIES _____ LIN. FT.	ADDED [] FOR EQUALITIES _____ LIN. FT.	ADDED [] FOR EQUALITIES _____ LIN. FT.	ADDED [] FOR EQUALITIES _____ LIN. FT.
DEDUCTED [] NOT INCLUDED _____ LIN. FT.	DEDUCTED [] NOT INCLUDED _____ LIN. FT.	DEDUCTED [] NOT INCLUDED _____ LIN. FT.	DEDUCTED [] NOT INCLUDED _____ LIN. FT.
RAILROAD CROSSINGS NO. _____ LIN. FT.	RAILROAD CROSSINGS NO. _____ LIN. FT.	RAILROAD CROSSINGS NO. _____ LIN. FT.	RAILROAD CROSSINGS NO. _____ LIN. FT.
BRIDGES _____ LIN. FT.	BRIDGES _____ LIN. FT.	BRIDGES _____ LIN. FT.	BRIDGES _____ LIN. FT.
EASTBOUND <u>310.04 & 243.95</u>		EASTBOUND <u>310.04 & 243.95</u>	
WESTBOUND <u>305.99 & 242.06</u>		WESTBOUND <u>305.99 & 242.06</u>	

CR 1226		KY 191	
LENGTH <u>2873.68</u> LIN. FT. <u>0.544</u> MILES	LENGTH <u>322.26</u> LIN. FT. <u>0.061</u> MILES	LENGTH <u>2873.68</u> LIN. FT. <u>0.544</u> MILES	LENGTH <u>322.26</u> LIN. FT. <u>0.061</u> MILES
ADDED [] FOR EQUALITIES _____ LIN. FT.	ADDED [] FOR EQUALITIES _____ LIN. FT.	ADDED [] FOR EQUALITIES _____ LIN. FT.	ADDED [] FOR EQUALITIES _____ LIN. FT.
DEDUCTED [] NOT INCLUDED _____ LIN. FT.	DEDUCTED [] NOT INCLUDED _____ LIN. FT.	DEDUCTED [] NOT INCLUDED _____ LIN. FT.	DEDUCTED [] NOT INCLUDED _____ LIN. FT.
RAILROAD CROSSINGS NO. _____ LIN. FT.	RAILROAD CROSSINGS NO. _____ LIN. FT.	RAILROAD CROSSINGS NO. _____ LIN. FT.	RAILROAD CROSSINGS NO. _____ LIN. FT.
BRIDGES _____ LIN. FT.	BRIDGES _____ LIN. FT.	BRIDGES _____ LIN. FT.	BRIDGES _____ LIN. FT.

RAMP A		RAMP B		RAMP C		RAMP D	
LENGTH <u>1671.84</u> LIN. FT. <u>0.317</u> MILES	LENGTH <u>1536.09</u> LIN. FT. <u>0.291</u> MILES	LENGTH <u>2094.37</u> LIN. FT. <u>0.397</u> MILES	LENGTH <u>1913.29</u> LIN. FT. <u>0.362</u> MILES	LENGTH <u>1671.84</u> LIN. FT. <u>0.317</u> MILES	LENGTH <u>1536.09</u> LIN. FT. <u>0.291</u> MILES	LENGTH <u>2094.37</u> LIN. FT. <u>0.397</u> MILES	LENGTH <u>1913.29</u> LIN. FT. <u>0.362</u> MILES
ADDED [] FOR EQUALITIES _____ LIN. FT.	ADDED [] FOR EQUALITIES _____ LIN. FT.	ADDED [] FOR EQUALITIES _____ LIN. FT.	ADDED [] FOR EQUALITIES _____ LIN. FT.	ADDED [] FOR EQUALITIES _____ LIN. FT.	ADDED [] FOR EQUALITIES _____ LIN. FT.	ADDED [] FOR EQUALITIES _____ LIN. FT.	ADDED [] FOR EQUALITIES _____ LIN. FT.
DEDUCTED [] NOT INCLUDED _____ LIN. FT.	DEDUCTED [] NOT INCLUDED _____ LIN. FT.	DEDUCTED [] NOT INCLUDED _____ LIN. FT.	DEDUCTED [] NOT INCLUDED _____ LIN. FT.	DEDUCTED [] NOT INCLUDED _____ LIN. FT.	DEDUCTED [] NOT INCLUDED _____ LIN. FT.	DEDUCTED [] NOT INCLUDED _____ LIN. FT.	DEDUCTED [] NOT INCLUDED _____ LIN. FT.
RAILROAD CROSSINGS NO. _____ LIN. FT.	RAILROAD CROSSINGS NO. _____ LIN. FT.	RAILROAD CROSSINGS NO. _____ LIN. FT.	RAILROAD CROSSINGS NO. _____ LIN. FT.	RAILROAD CROSSINGS NO. _____ LIN. FT.	RAILROAD CROSSINGS NO. _____ LIN. FT.	RAILROAD CROSSINGS NO. _____ LIN. FT.	RAILROAD CROSSINGS NO. _____ LIN. FT.
BRIDGES <u>235</u> LIN. FT.	BRIDGES _____ LIN. FT.	BRIDGES _____ LIN. FT.	BRIDGES <u>165</u> LIN. FT.	BRIDGES _____ LIN. FT.	BRIDGES _____ LIN. FT.	BRIDGES _____ LIN. FT.	BRIDGES _____ LIN. FT.

**Commonwealth of Kentucky
DEPARTMENT OF HIGHWAYS
COUNTIES OF
WOLFE & MORGAN**

ITEM NO. 10-126.70

PROJECT NUMBER: 12FO C35 D625 10 FD52 1550

LETTING DATE: _____

RECOMMENDED BY: _____ PROJECT MANAGER DATE: _____

PLAN APPROVED BY: _____ STATE HIGHWAY ENGINEER DATE: _____

COUNTY OF	ITEM NO.	SHEET NO.
WOLFE	10-126.70	R14

DITCH CONSTRUCTION		RAMP D @		
STA TO STA	SIZE/TYPE	CHANNEL LINING		
		TYPE	DEPTH	QUANTITY
LT 50+44 to 51+50	SPCL V			
LT 51+50 to 54+70	TYP RDWY			
RT 51+19 to 54+00	2' FB			
RT 54+00 to 54+70	4' FB			

DITCH CONSTRUCTION		RAMP C @		
STA TO STA	SIZE/TYPE	CHANNEL LINING		
		TYPE	DEPTH	QUANTITY
LT 25+00 to 30+48	2' FB			
RT 25+00 to 30+40	2' FB			

MOUNTAIN PARKWAY
 PI STA 135+24.21
 $\Delta = 37^{\circ}17'00''$ RT
 T = 1798.06'
 L = 3468.32'
 R = 5330.00'
 E = 295.12'
 e = 3.41%
 Runoff = 192'
 Runout = 113'

KY 191
 PI STA 48+91.11
 $\Delta = 59^{\circ}41'24''$ LT
 T = 132.72'
 L = 240.98'
 R = 231.31' AREA U/C
 E = 35.37'
 e = 2.00%
 Runoff = 37'
 Runout = 37'

RAMP C
 PI STA 27+77.39
 $\Delta = 25^{\circ}00'11''$ LT
 T = 241.68'
 L = 475.66'
 R = 1090.00'
 E = 26.47'
 e = 3.97%
 Runoff = 96'
 Runout = 49'

PI STA 346+82.63
 $\Delta = 92^{\circ}57'48''$ LT
 T_s = 1194.95' 1218.78'
 L_s = 154.00' 203.00'
 L_c = 1548.37'
 O_s = 4^{\circ}09'43" 5^{\circ}29'11"
 LT = 102.70' 135.40'
 ST = 51.36' 67.73'
 R = 1060.00'
 E = 481.24'
 e = 6.00%
 Runoff = 154' 203'
 Runout = 52' 67.67'

- POLE PRIVATE 6
- POLE PUBLIC 1
- POLE REMOVE 6
- POLE INSTALL 2

DITCH CONSTRUCTION		MT PKWY @		
STA TO STA	SIZE/TYPE	CHANNEL LINING		
		TYPE	DEPTH	QUANTITY
133+25 to 136+50	SPCL V			
139+50 to 142+68.5	SPCL V			
142+68.5 to 143+00	TYP RDWY			

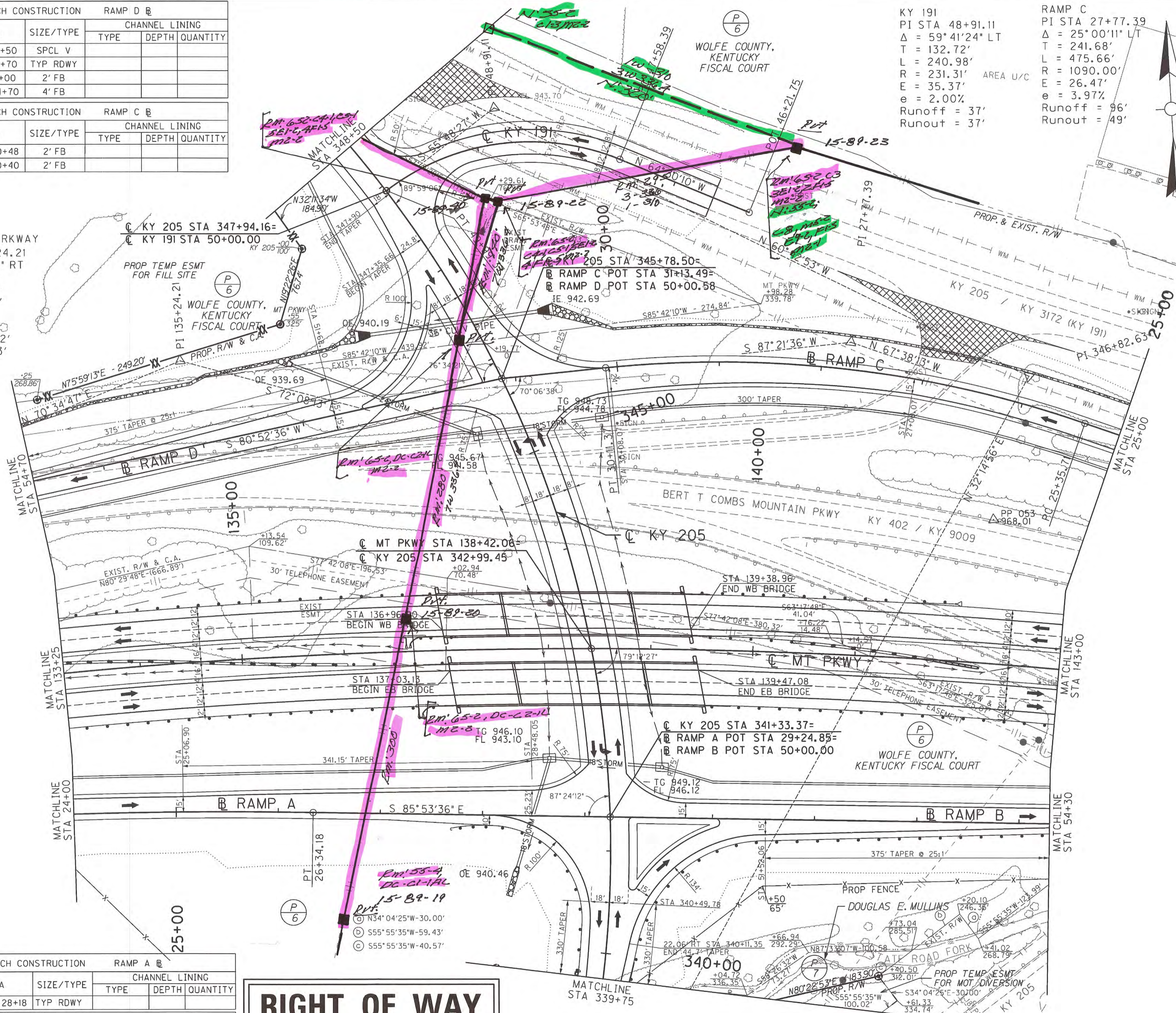
DITCH CONSTRUCTION		KY 205 @		
STA TO STA	SIZE/TYPE	CHANNEL LINING		
		TYPE	DEPTH	QUANTITY
LT 341+xx to 345+00	TYP RDWY			
LT 345+00 to 345+40.5	SPCL V			
LT 346+60 to 348+50	2' FB			
RT 341+xx to 345+19.4	TYP RDWY			

DITCH CONSTRUCTION		KY 191 @		
STA TO STA	SIZE/TYPE	CHANNEL LINING		
		TYPE	DEPTH	QUANTITY
LT 46+ to 47+	TYP RDWY			
RT 46+ to 49+	TYP RDWY			

FILE NAME: I:\LEX\PRJ\000008298\DESIGN\PLAN SET\ROI400PL.DGN

USER: bcoomes
DATE PLOTTED: October 1, 2014

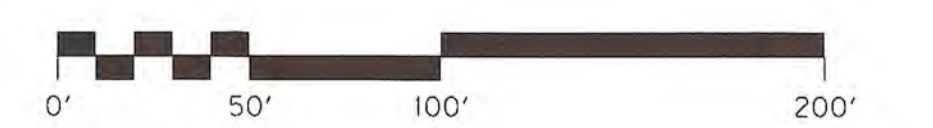
E-SHEET NAME:
MicroStation v8.11.9.357



RIGHT OF WAY PLANS

DITCH CONSTRUCTION		RAMP A @		
STA TO STA	SIZE/TYPE	CHANNEL LINING		
		TYPE	DEPTH	QUANTITY
LT 24+05.6 to 28+18	TYP RDWY			

DITCH CONSTRUCTION		RAMP B @		
STA TO STA	SIZE/TYPE	CHANNEL LINING		
		TYPE	DEPTH	QUANTITY
LT 50+69.6 to 54+30	TYP RDWY			

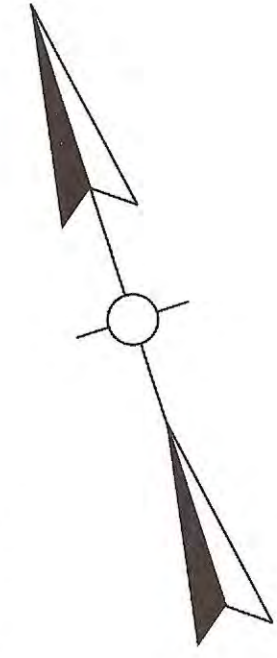
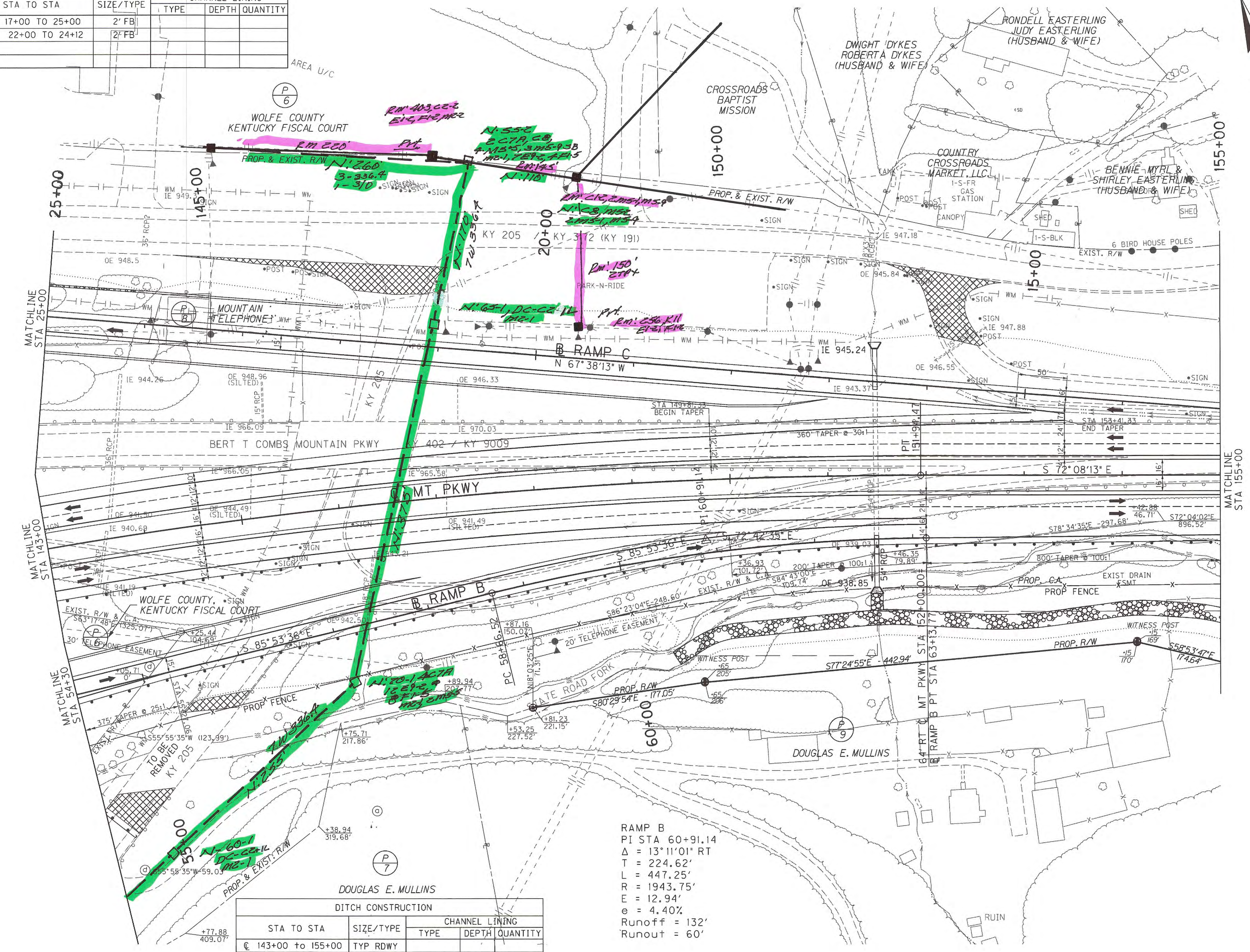


MT PKWY PLAN SHEET
STA 133+25 TO STA 143+00

SCALE: 1" = 50'

DITCH CONSTRUCTION		RAMP C		CHANNEL LINING	
STA TO STA	SIZE/TYPE	TYPE	DEPTH	QUANTITY	
LT 17+00 TO 25+00	2' FB				
RT 22+00 TO 24+12	2' FB				

FILE NAME: I:\LEX\PRJ\00008298\DESIGN\PLAN SET\RO2000PL.DGN
 USER: rdcoston DATE PLOTTED: October 1, 2014
 E-SHEET NAME: MicroStation v8.11.9.459

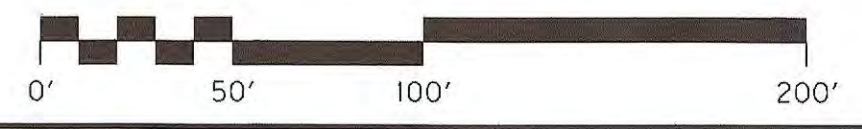


- POLE PRIVATE 2
- POLE PUBLIC
- POLE REMOVE 2
- POLE INSTALL 4

RAMP B
 PI STA 60+91.14
 $\Delta = 13^\circ 11' 01''$ RT
 T = 224.62'
 L = 447.25'
 R = 1943.75'
 E = 12.94'
 e = 4.40%
 Runoff = 132'
 Runout = 60'

DITCH CONSTRUCTION		CHANNEL LINING	
STA TO STA	SIZE/TYPE	TYPE	DEPTH QUANTITY
143+00 to 155+00	TYP RDWY		
LT 54+30 to 58+22	TYP RDWY		
RT 60+46.6 to 155+00	15' CHAN		

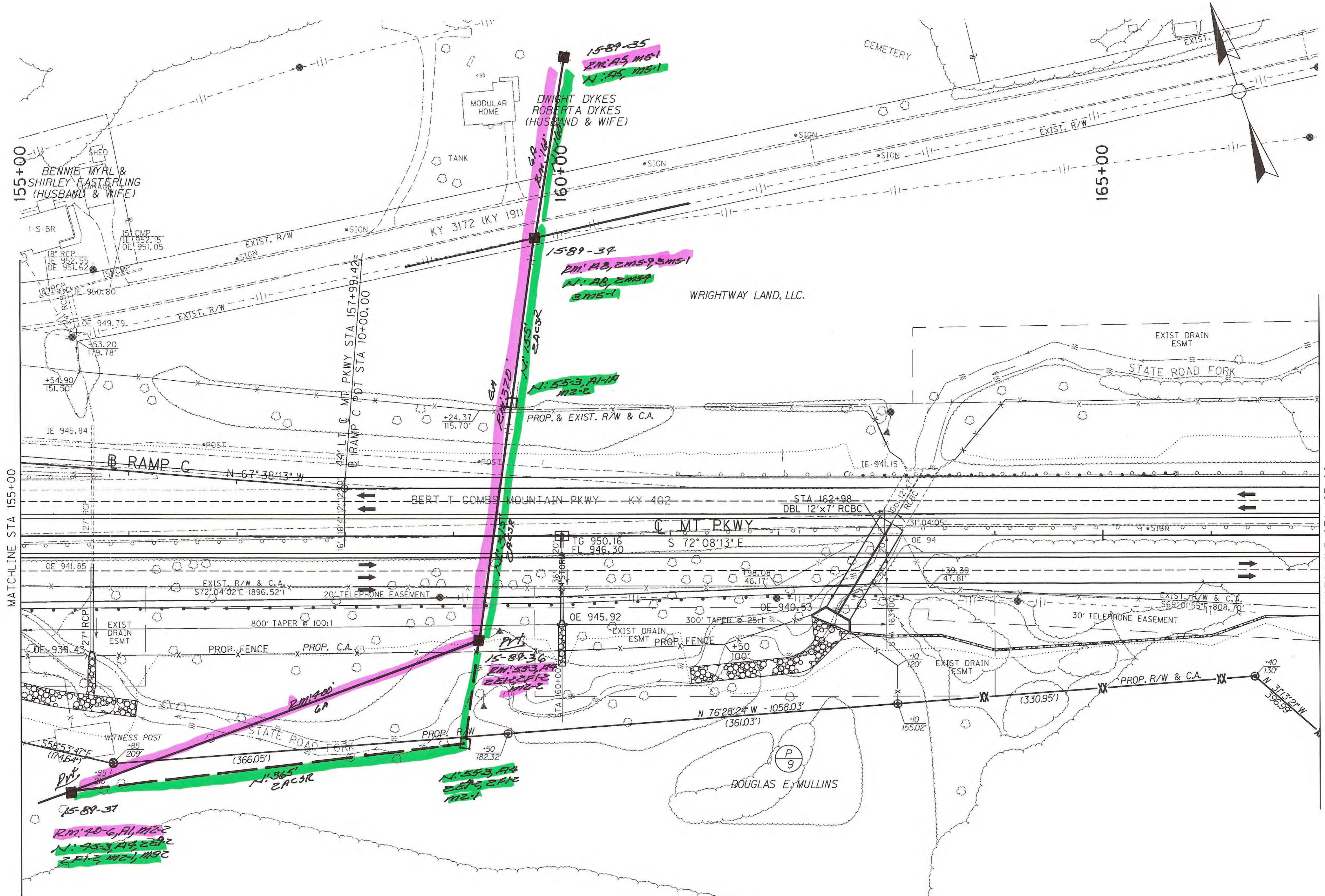
RIGHT OF WAY PLANS



MT PKWY PLAN SHEET
 STA 143+00 TO STA 155+00

SCALE: 1" = 50'

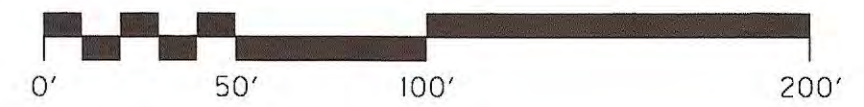
FILE NAME: I:\LEX\PRJ\00008298\DESIGN\PLAN SET\RO2400PL.DGN
 USER: nposton DATE PLOTTED: October 1, 2014
 MicroStation v8.11.9.459 E-SHEET NAME:



- POLE PRIVATE 2
- POLE PUBLIC 1
- POLE REMOVE 2
- POLE INSTALL 3

STA TO STA	SIZE/TYPE	DITCH CONSTRUCTION		
		CHANNEL LINING TYPE	DEPTH	QUANTITY
155+00 to 159+93.8	TYP RDWY			
160+06.2 to 167+00	TYP RDWY			
155+00 to 156+06	15' CHAN			
162+58 to 166+50	2' FB			
166+50 to 167+00	TYP RDWY			

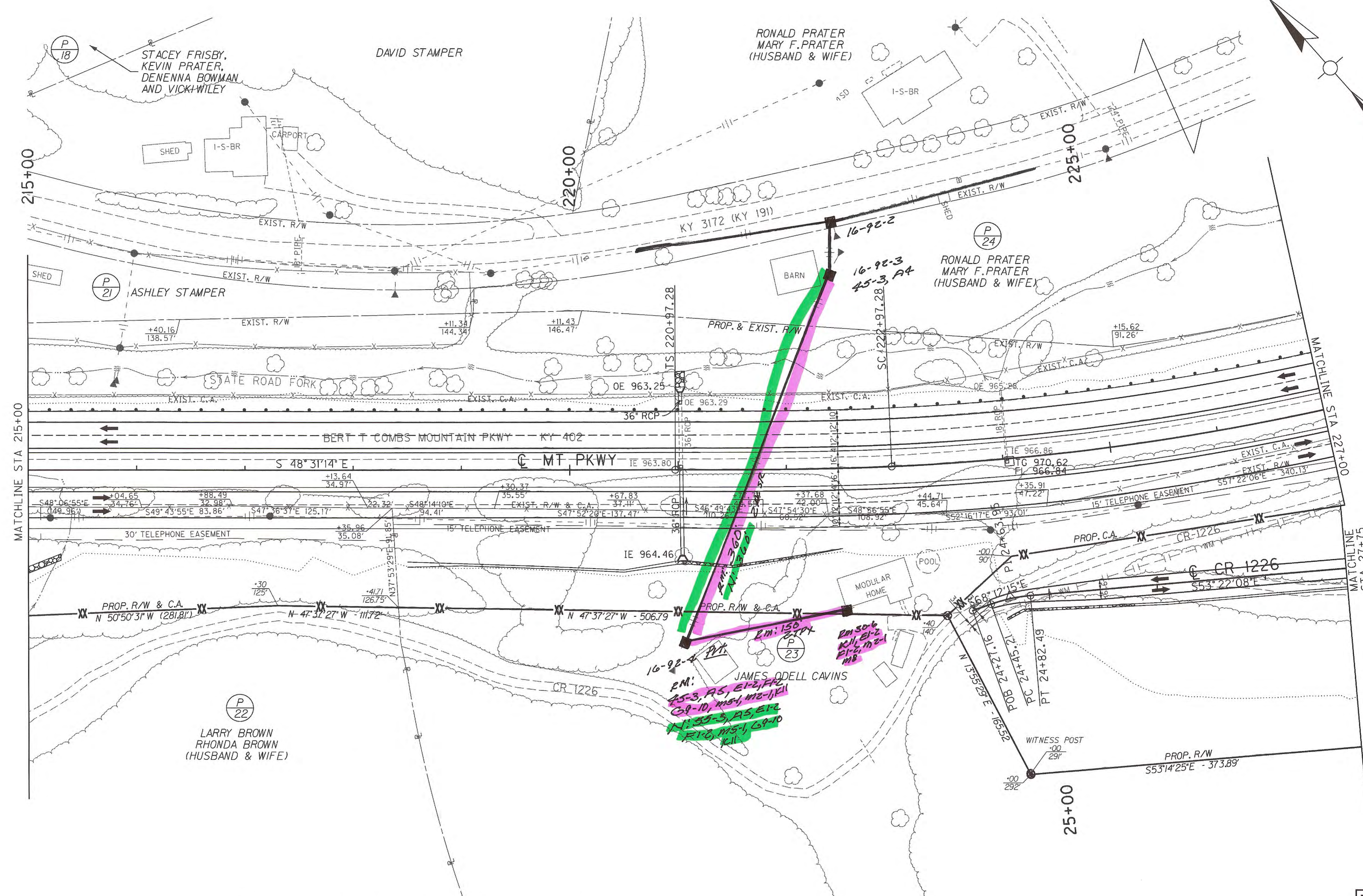
RIGHT OF WAY PLANS



MT PKWY PLAN SHEET
 STA 155+00 TO STA 167+00

SCALE: 1"= 50'

FILE NAME: I:\LEX\PRJ\000008298\DESIGN\PLAN SET\VR03400PL.DGN
 USER: bcoomes DATE PLOTTED: October 1, 2014
 E-SHEET NAME: MicroStation v8.11.9.357

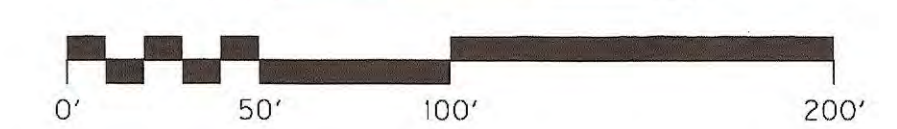


POLE PRIVATE 2
 POLE PUBLIC 1
 POLE REMOVE 2
 POLE INSTALL 1

STA TO STA	SIZE/TYPE	DITCH CONSTRUCTION		
		TYPE	DEPTH	QUANTITY
€ 215+00 to 224+01.6	TYP RDWY			
€ 224+09.9 to 227+00	TYP RDWY			
RT 215+00 to 215+30	6' FB			
RT 215+30 to 217+00	2' FB			
RT 217+00 to 218+34	TYP RDWY			
RT 218+50 to 222+50	2' FB			
RT 222+50 to 227+00	TYP RDWY			
RT 24+77.6 to 28+00	2' FB			

PI STA 24+63.95
 $\Delta = 14^\circ 50' 07''$ RT
 T = 19.75'
 L = 37.28'
 R = 144.00'
 E = 1.22'
 e =
 Runoff =
 Runout =

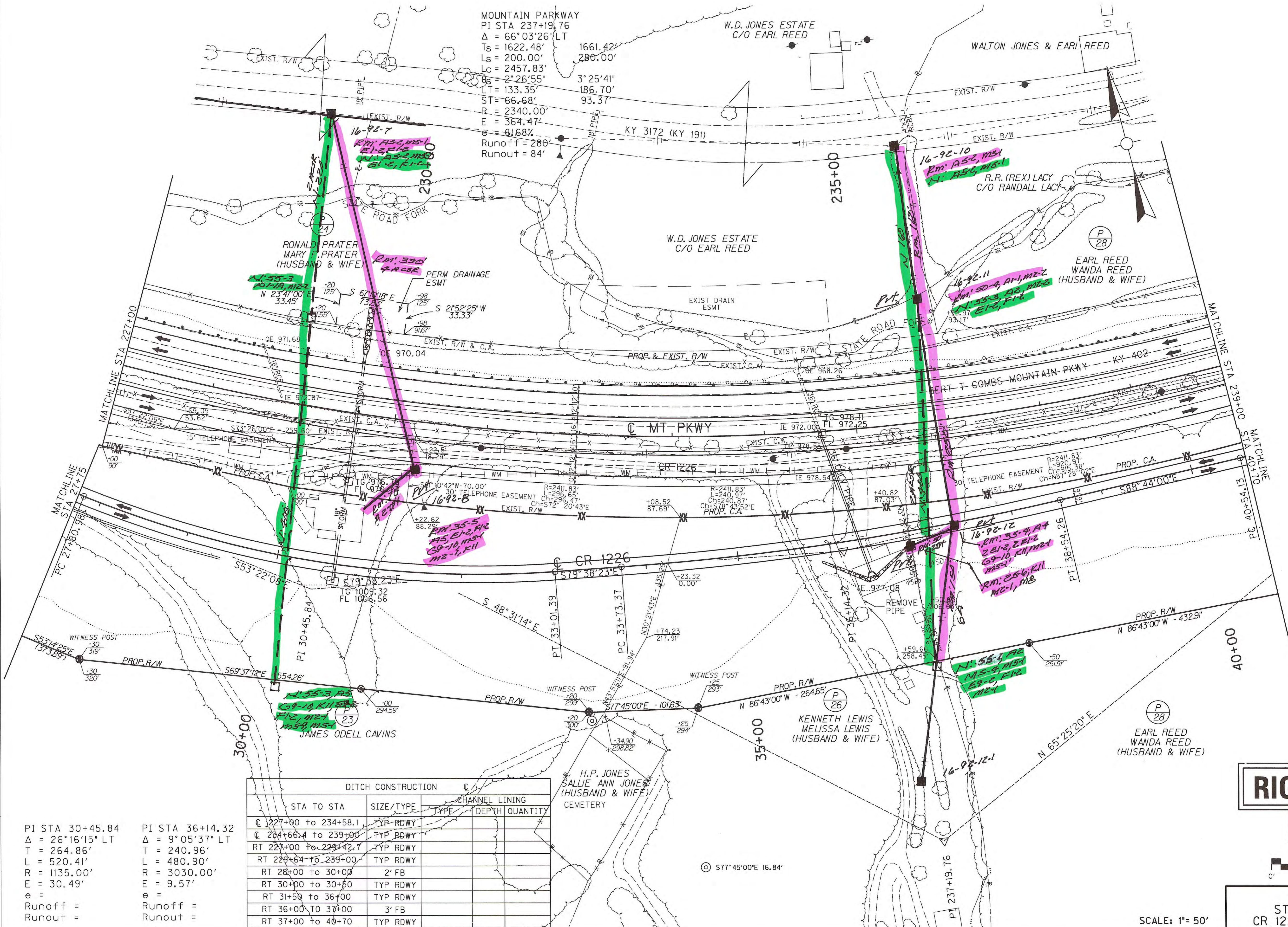
RIGHT OF WAY PLANS



MT PKWY PLAN SHEET
 STA 215+00 TO STA 227+00
 CR 1226 STA 24+77.58 TO STA 28+00

SCALE: 1" = 50'

FILE NAME: I:\LEX\PRJ\0008298\DESIGN\PLAN SET\YR03700PL.DGN
 USER: nposton
 DATE PLOTTED: October 1, 2014
 E-SHEET NAME: MicroStation v8.11.9.459



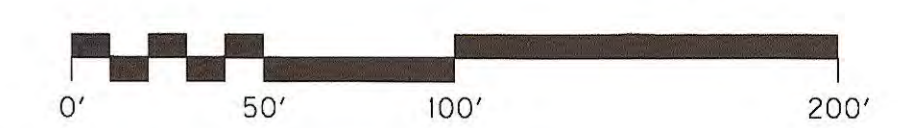
POLE PRIVATE 4
 POLE PUBLIC —
 POLE REMOVE 4
 POLE INSTALL 4

STA TO STA	SIZE/TYPE	CHANNEL LINING	
		TYPE	DEPTH QUANTITY
CR 1226 @ 227+00 to 234+58.1	TYP RDWY		
CR 234+66.4 to 239+00	TYP RDWY		
RT 227+00 to 229+42.7	TYP RDWY		
RT 229+64 to 239+00	TYP RDWY		
RT 28+00 to 30+00	2' FB		
RT 30+00 to 30+50	TYP RDWY		
RT 31+50 to 36+00	TYP RDWY		
RT 36+00 to 37+00	3' FB		
RT 37+00 to 40+70	TYP RDWY		

PI STA 30+45.84
 $\Delta = 26^\circ 16' 15''$ LT
 $T = 264.86'$
 $L = 520.41'$
 $R = 1135.00'$
 $E = 30.49'$
 $e =$
 Runoff =
 Runout =

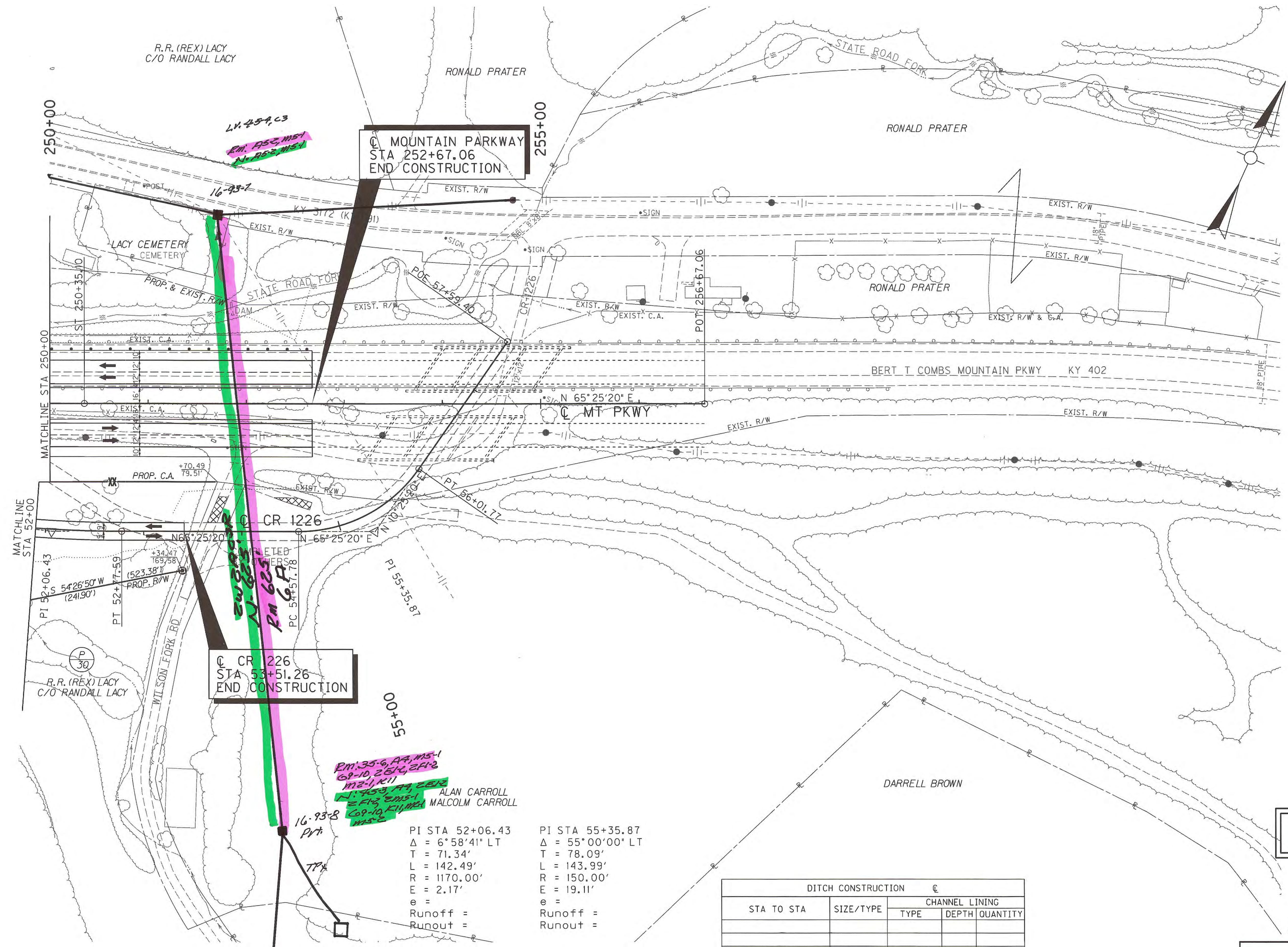
PI STA 36+14.32
 $\Delta = 9^\circ 05' 37''$ LT
 $T = 240.96'$
 $L = 480.90'$
 $R = 3030.00'$
 $E = 9.57'$
 $e =$
 Runoff =
 Runout =

RIGHT OF WAY PLANS



MT PKWY PLAN SHEET
 STA 227+00 TO STA 239+00
 CR 1226 STA 28+00 TO STA 40+70
 SCALE: 1" = 50'

POLE PRIVATE /
 POLE PUBLIC /
 POLE REMOVE /
 POLE INSTALL /



MT P 16-93-7
 RM 195-6, 195-7
 N 195-8, 195-9

CR 1226
 STA 52+06.43
 STA 53+51.26
 END CONSTRUCTION

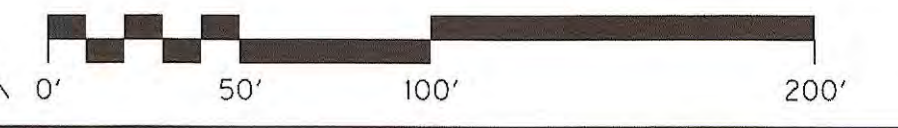
RM 35-6, 35-7, 35-8
 69-10, 26-1, 26-2
 12-1, 12-2
 12-3, 12-4, 12-5
 26-10, 26-11, 26-12
 12-1, 12-2
 12-3, 12-4, 12-5
 26-10, 26-11, 26-12

PI STA 52+06.43
 $\Delta = 6^\circ 58' 41''$ LT
 T = 71.34'
 L = 142.49'
 R = 1170.00'
 E = 2.17'
 e =
 Runoff =
 Runout =

PI STA 55+35.87
 $\Delta = 55^\circ 00' 00''$ LT
 T = 78.09'
 L = 143.99'
 R = 150.00'
 E = 19.11'
 e =
 Runoff =
 Runout =

DITCH CONSTRUCTION		CHANNEL LINING		
STA TO STA	SIZE/TYPE	TYPE	DEPTH	QUANTITY

RIGHT OF WAY PLANS

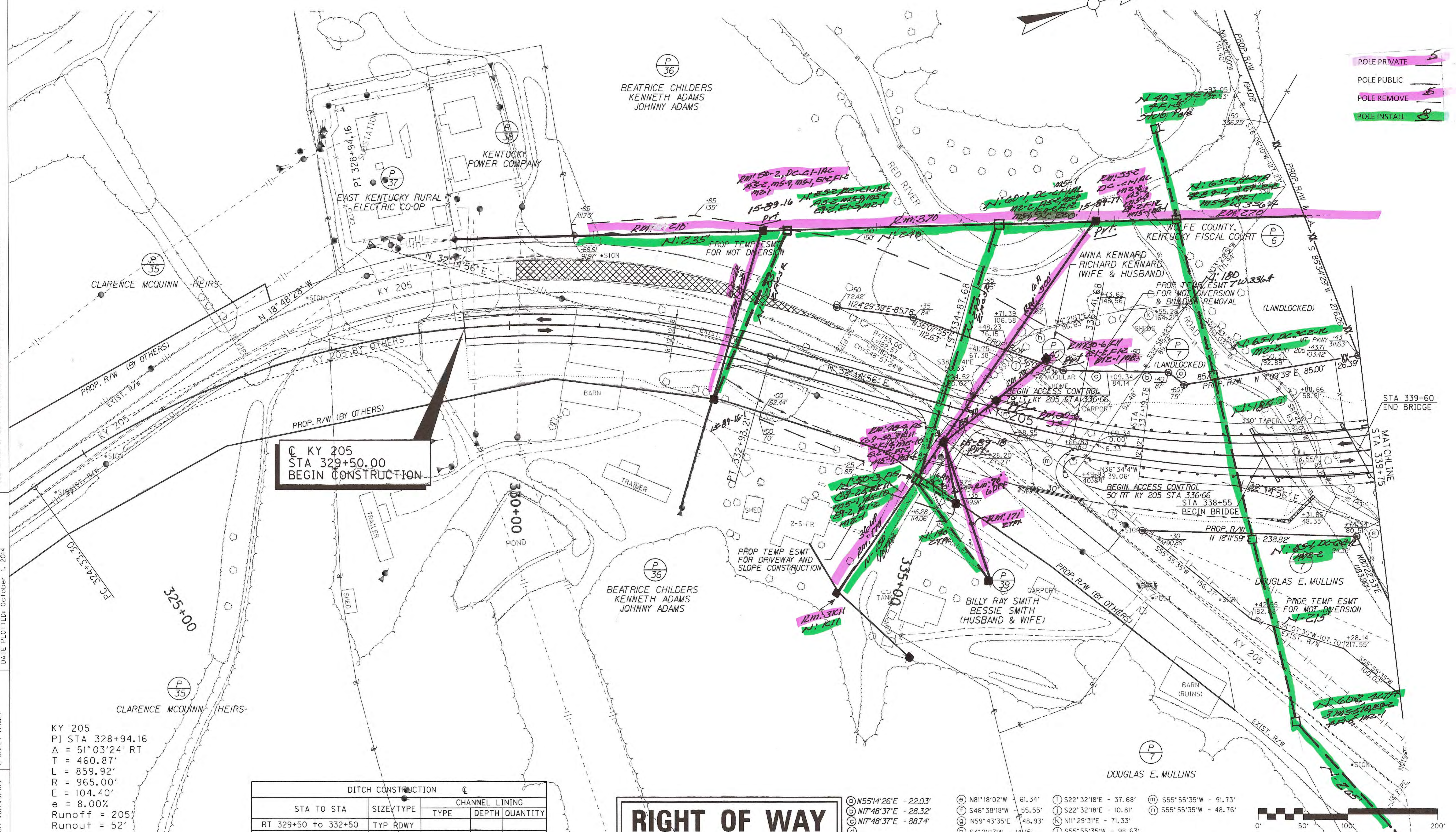


MT PKWY PLAN SHEET
 STA 250+00 TO STA 252+67.06
 CR 1226 STA 52+00 TO STA 53+51.26

SCALE: 1" = 50'

FILE NAME: I:\LEX\PRJ\000008298\DESIGN\PLAN SET\R43\00PL.DGN
 USER: nposton
 DATE PLOTTED: October 1, 2014
 E-SHEET NAME:
 MicroStation v8.11.9.459

FILE NAME: I:\LEX\PRJ\00008298\DESIGN\PLAN_SET\N40600PL.DGN
 USER: nposton DATE PLOTTED: October 1, 2014
 E-SHEET NAME: MicroStation v8.11.9.459



POLE PRIVATE 5
 POLE PUBLIC 1
 POLE REMOVE 6
 POLE INSTALL 8

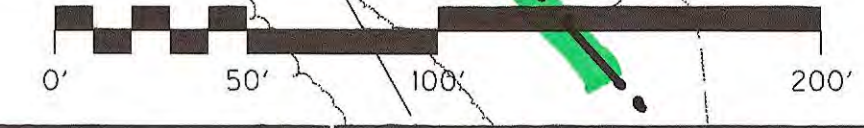
☐ KY 205
 STA 329+50.00
 BEGIN CONSTRUCTION

KY 205
 PI STA 328+94.16
 $\Delta = 51^{\circ}03'24''$ RT
 T = 460.87'
 L = 859.92'
 R = 965.00'
 E = 104.40'
 e = 8.00%
 Runoff = 205
 Runout = 52'

STA TO STA	SIZE/TYPE	CHANNEL LINING	
		TYPE	DEPTH QUANTITY
RT 329+50 to 332+50	TYP RDWY		
RT 332+50 to 334+60.2	SPCL V		
RT 335+25.3 to 336+08.5	SPCL V		
RT 336+65.7 to 338+50	SPCL V		
RT 338+50 to 339+08.3	3' FB		

RIGHT OF WAY PLANS

- ⊙ N55°14'26"E - 22.03'
- ⊙ N81°18'02"W - 61.34'
- ⊙ N17°48'37"E - 28.32'
- ⊙ N17°48'37"E - 88.74'
- ⊙ N59°43'35"E - 48.93'
- ⊙ S46°38'18"W - 55.55'
- ⊙ S42°32'18"E - 37.68'
- ⊙ S22°32'18"E - 10.81'
- ⊙ N11°29'31"E - 71.33'
- ⊙ S55°55'35"W - 98.63'
- ⊙ S55°55'35"W - 91.73'
- ⊙ S55°55'35"W - 48.76'



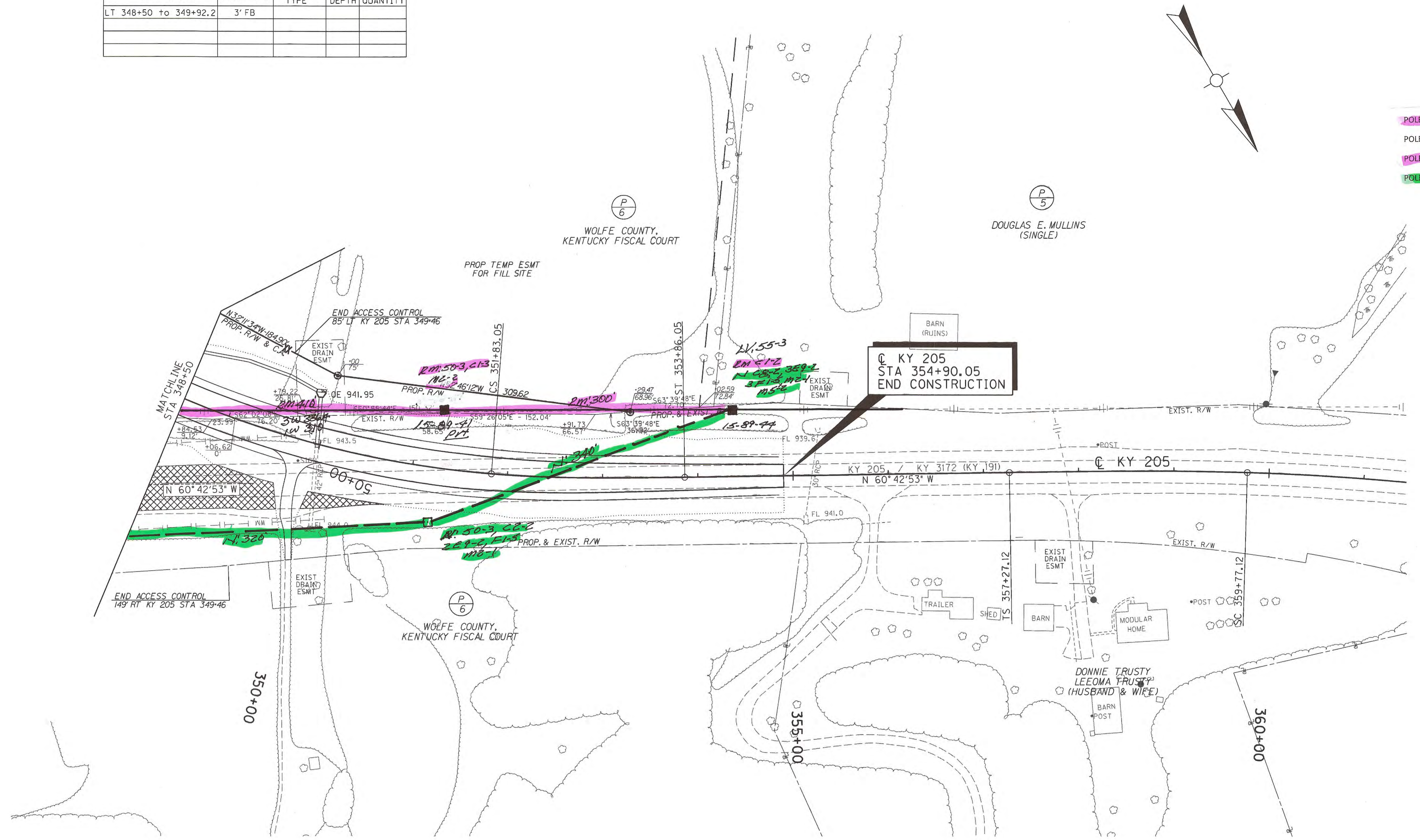
SCALE: 1" = 50'

KY 205 PLAN SHEET
 STA 329+50 TO STA 339+75

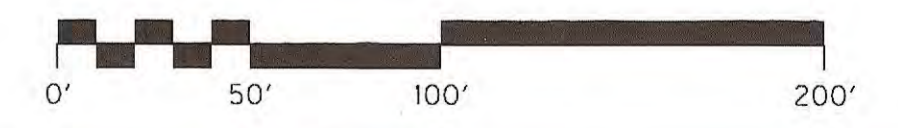
DITCH CONSTRUCTION		CHANNEL LINING		
STA TO STA	SIZE/TYPE	TYPE	DEPTH	QUANTITY
LT 348+50 to 349+92.2	3' FB			

- POLE PRIVATE
- POLE PUBLIC
- POLE REMOVE
- POLE INSTALL

FILE NAME: I:\LEX\PRJ\00008298\DESIGN\PLAN SET\R04800PL.DGN
 USER: nposton DATE PLOTTED: October 1, 2014
 E-SHEET NAME: MicroStation v8.11.9.459



RIGHT OF WAY PLANS



SCALE: 1" = 50'
 KY 205 PLAN SHEET
 STA 348+50 TO STA 354+90.05